

# Accidentals

Name: \_\_\_\_\_

## PART 1: Identifying Notes with Accidentals

Directions: Write the letter name and accidental (e.g. C#) of the following notes in the blanks.

### A. Treble Clef

A musical staff in treble clef with a key signature of one sharp (F#). The staff contains ten notes, each with an accidental. The notes are: 1. F#4, 2. Bb4, 3. D5, 4. Ab4, 5. C#5, 6. C#5, 7. D5, 8. Bb4, 9. Ab4, 10. C#5.

1. \_\_\_\_\_ 2. \_\_\_\_\_ 3. \_\_\_\_\_ 4. \_\_\_\_\_ 5. \_\_\_\_\_ 6. \_\_\_\_\_ 7. \_\_\_\_\_ 8. \_\_\_\_\_ 9. \_\_\_\_\_ 10. \_\_\_\_\_

### B. Bass Clef

A musical staff in bass clef with a key signature of one sharp (F#). The staff contains ten notes, each with an accidental. The notes are: 1. F#2, 2. C#3, 3. Bb2, 4. Bb2, 5. C#3, 6. C#3, 7. Bb2, 8. Bb2, 9. Bb2, 10. F#2.

1. \_\_\_\_\_ 2. \_\_\_\_\_ 3. \_\_\_\_\_ 4. \_\_\_\_\_ 5. \_\_\_\_\_ 6. \_\_\_\_\_ 7. \_\_\_\_\_ 8. \_\_\_\_\_ 9. \_\_\_\_\_ 10. \_\_\_\_\_

### C. Ledger Lines

A musical staff in treble clef with a key signature of one sharp (F#). The staff contains ten notes, each with an accidental. The notes are: 1. F#2, 2. C#3, 3. Bb2, 4. Bb2, 5. C#3, 6. C#3, 7. Bb2, 8. Bb2, 9. Bb2, 10. F#2.

1. \_\_\_\_\_ 2. \_\_\_\_\_ 3. \_\_\_\_\_ 4. \_\_\_\_\_ 5. \_\_\_\_\_ 6. \_\_\_\_\_ 7. \_\_\_\_\_ 8. \_\_\_\_\_ 9. \_\_\_\_\_ 10. \_\_\_\_\_

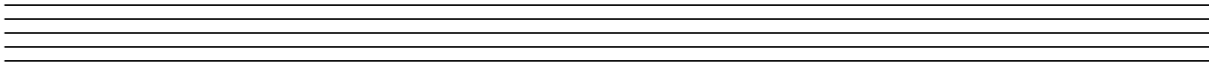
## Accidentals

---

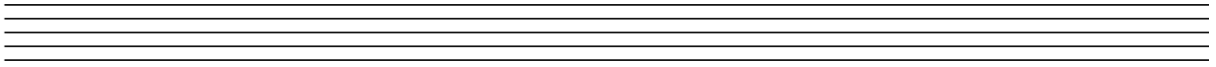
### **PART 2: Drawing Accidentals**

**Directions:** Draw the indicated accidentals, on different lines and spaces.

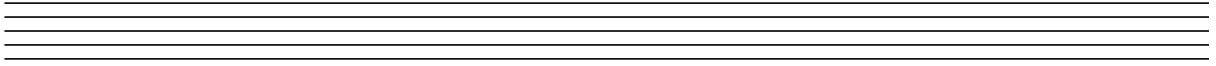
1. Draw five sharps.



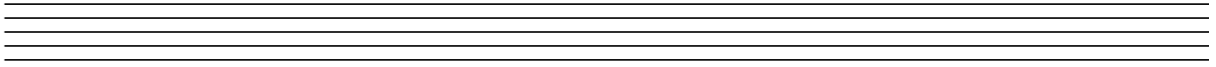
2. Draw five flats.



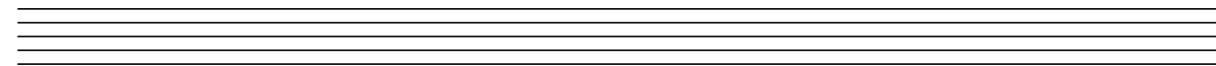
3. Draw five naturals.



4. Draw five double sharps.



5. Draw five double flats.



## Accidentals

### PART 3: Drawing Notes with Accidentals

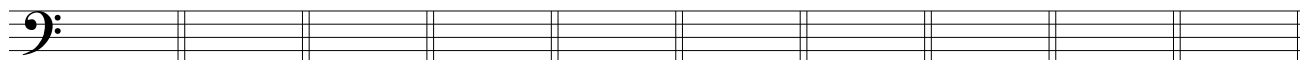
Directions: Draw the notes and their accidentals in the indicated clefs, in any octave.

#### A. Treble Clef



1. B $\flat$    2. G $\sharp$    3. A $\natural$    4. D $\sharp$    5. C $\times$    6. F $\flat$    7. A $\flat$    8. E $\sharp$    9. B $\times$    10. G $\natural$

#### B. Bass Clef



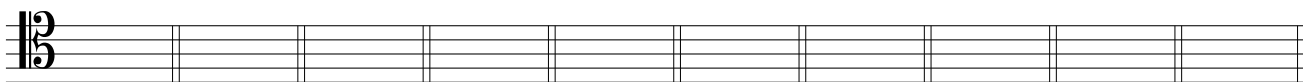
1. E $\flat$    2. A $\sharp$    3. D $\natural$    4. G $\sharp$    5. F $\times$    6. C $\flat$    7. B $\flat$    8. A $\sharp$    9. E $\times$    10. D $\natural$

#### C. Alto Clef



1. C $\flat$    2. F $\sharp$    3. B $\natural$    4. E $\sharp$    5. A $\times$    6. D $\flat$    7. G $\flat$    8. C $\sharp$    9. F $\times$    10. B $\natural$

#### D. Tenor Clef



1. D $\flat$    2. C $\sharp$    3. F $\natural$    4. B $\sharp$    5. E $\times$    6. A $\flat$    7. D $\flat$    8. G $\sharp$    9. C $\times$    10. F $\natural$