

# The Piano Keyboard and the Grand Staff

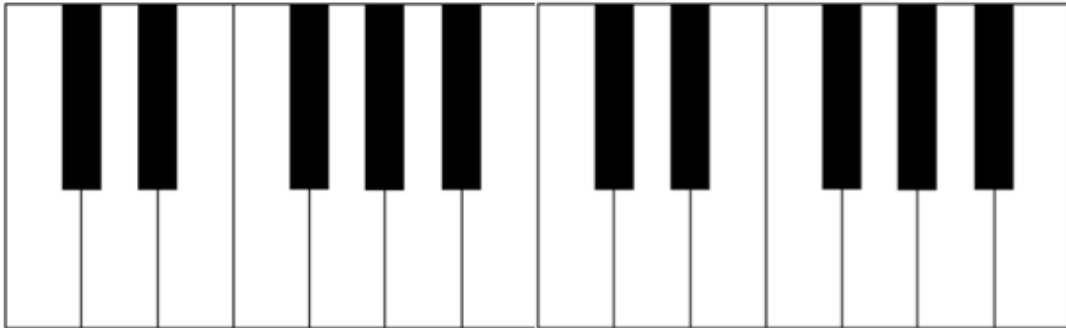
---

Name: \_\_\_\_\_

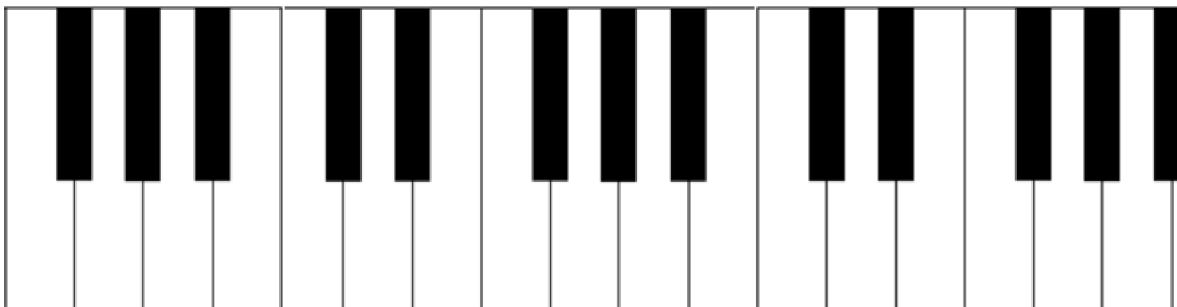
## PART 1: White Keys on the Piano Keyboard

**Directions:** Write letter names on the white keys of the piano keyboards. Notice that the pattern of black keys changes between examples.

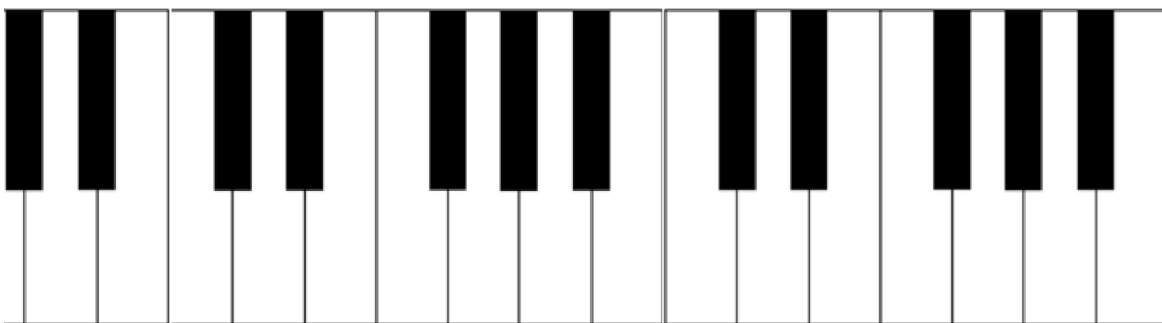
A.



B.



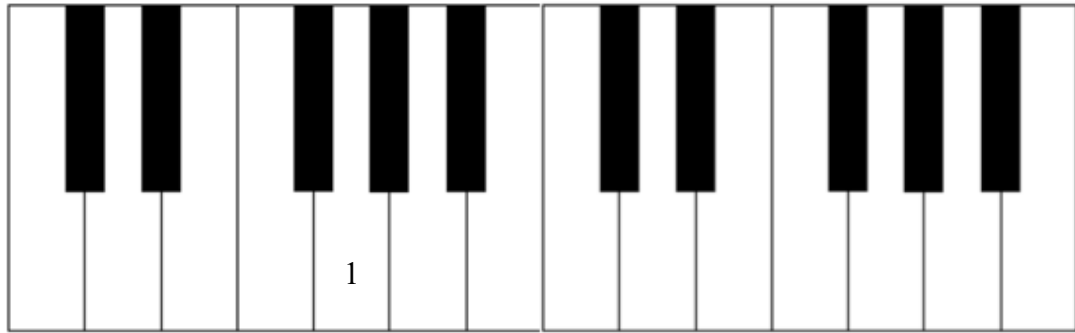
C.



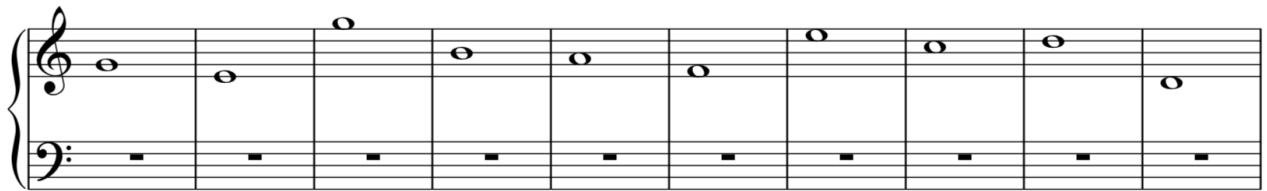
## PART 2: The Grand Staff and the Piano Keyboard

**Directions:** Write the numbers of the notes found on the grand staves onto the white keys of the piano keyboards. Number one has been done in each example.

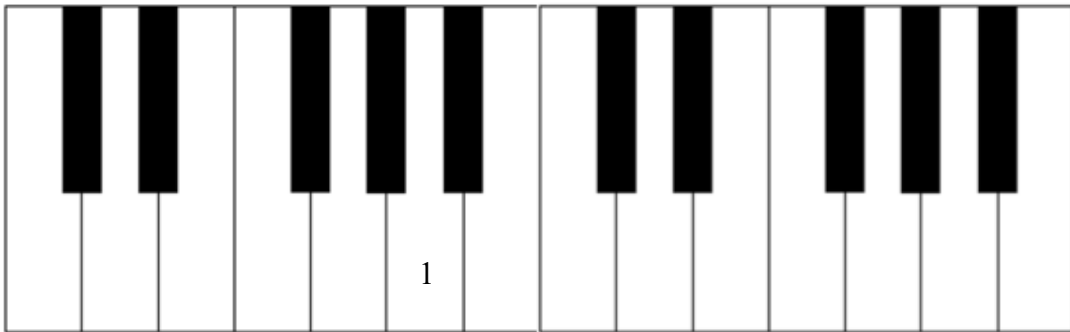
A.



1.      2.      3.      4.      5.      6.      7.      8.      9.      10.



B.



1.      2.      3.      4.      5.      6.      7.      8.      9.      10.

